

NEWSLETTER



Spring 2016

Sideoats Grama, Texas State Grass

Annual Conservation Awards Dinner was March 23



Presenters and students whose poster or essay won Soil and Water Conservation District awards are (from left) Gina Koennecke, (presenter), Emily Seawald, Caleb Olfers, Hunter Kramer, Kate Darsey, Skylar Fifi, Madison Wilson, Katelynn Breedlove, and Brenda Burrier, (presenter).

2016 Beef & Range Field Day

The Gillespie County Soil and Water Conservation District hosted the Beef and Range Field Day at the Gillespie County Fair Grounds, on May 12th, 2016. There were nearly 325 attendees. There were twenty exhibitors at the event, which included plant identification booth as well as feed and seed companies, ag chemical information, agricultural and livestock equipment and many other information booths. Just prior to the program the Gillespie Soil and Water Conservation District provided a catered BBQ meal.

During registration Willard Dearing hosted Plant Identification including early summer plants. He brought a wide variety of different plants which he had identified. This gave the attendees a chance to identify some of the different varieties they may have on their property. This is important to

know how to control a certain plant. People also brought in plants for him to identify.

The program started with a presentation by Allan McGinty, Texas A&M University Professor & Extension Range Specialist Emeritus on Fence Line Brush Control. He presented different solutions to control brush in a fence line.

Rick Machen PhD, Animal & Natural Resource Management Texas A&M AgriLife Extension Service gave a presentation on Marketing Beef - From Cherry Springs to Mainland China. Mr. Machen presented a number of different factors to consider when marketing cattle.

Local Program updates were given by Brad Roeder, County Agent of the Gillespie County AgriLife Extension Office. Wayne Seipp, District Conservation for the Natural Resources Conservation

Services gave a update from NCRS.

The Gillespie County Soil and Water Conservation, through the generosity of many donors and sponsors, gave away numerous door prizes and had a raffle with five special items.

Attendance at field day earned two CEUs toward renewal of a private pesticide applicator license. 1 CEU was offered before registration on Laws & Regs. The Gillespie County Soil and Water Conservation District would like to thank all the exhibitors, donors, and sponsors that made the field day a success.

The event was sponsored jointly by Gillespie County Soil & Water Conservation District, United States Department of Agriculture, Natural Resources Conservation Service, and Texas AgriLife Extension Service.



2016 Award Winners and Gillespie Soil and Water Conservation Directors: Neal Eckert (Director), Nettie Pruett (Conservation Rancher), Cade Bonn (Director), Billy Roeder (Pioneer in Conservation), Guenther Ottmers (Director), Ken Cooke (Friend of Conservation representing Fredericksburg Standard-Radio Post), Patrick Kunz (Director) and James Wahrmund (Director).

Winners of Gillespie County SWCD's Conservation Awards were honored Wed., March 23. The Fredericksburg Lions Club hosted the annual event for the winners, their families, teachers, and County officials. Lions Club President opened the meeting. The awards were given after a hamburger dinner. Approx. 90 people attended.

Eight students won in the conservation poster and essay contests. Billy Roeder of White Oak received the 2016 Pioneer in Agriculture award. Nettie Pruett was honored as the Conservation Rancher, and the Fredericksburg Standard-Radio Post received the Friend of Conservation award.

SWCD directors presented the Poster and Essay winners with engraved plaques. Security State Bank & Trust gave students prizes in the amounts of \$75 for 1st, \$50 for 2nd place, and \$25 for 3rd place.

For the Poster contest, Skylar Fife, had the 1st place poster. Hunter Kramer 2nd place poster.

Emily Seewald had the 3rd place poster.

In the junior division Essay contest, Katelynn Breedlove, won 1st place. Caleb Olfers, placed 2nd. Mikayla Hughes, placed 3rd.

Kate Darsey had the first place essay, and Madison Wilson placed 2nd for ages 14-18.

PowerPoint slide presentations were shown about Billy Roeder, Pruett Ranch and Fredericksburg Standard-Radio Post during the meal.

These awards are part of the TSSWCB annual Texas Conservation Awards Program. Gillespie County is in Area II, which includes 44 southwest Texas counties. The Gillespie SWCD enters all their local winners in this contest. Caleb Olfers placed 1st, in the junior division Area II Essay contest. The Fredericksburg Standard-Radio Post won Runner-up for Friend of Conservation.

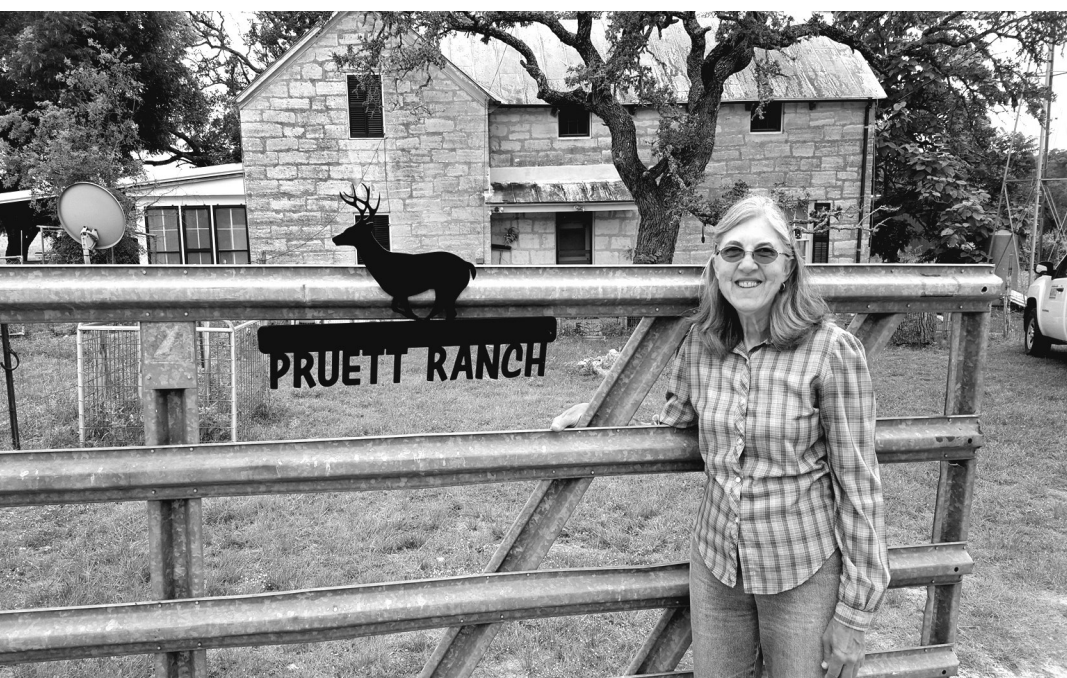
The Pioneer in Agriculture award honors families who have farmed or ranched most of their lives &

had a positive impact in our county. The Roeder Ranch was started in 1895. Billy's great-great-grandfather Jacob Roeder was among the first 150 settlers who came to the area in 1846.

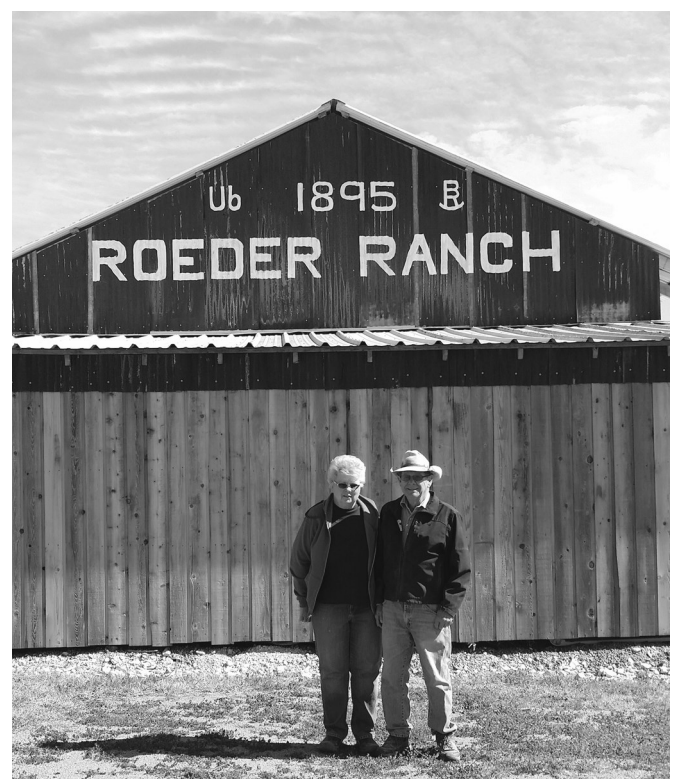
The Conservation Rancher honors someone who has and is currently performing conservation work on their land. Nettie Pruett has a deep appreciation for the land that has been in her family for generations and is a true conservationist. She has been a cooperater with the Gillespie SWCD since 1994.

Friend of Conservation is a community organization that contributes support for conservation. The Gillespie County SWCD has advertised with the Fredericksburg Standard-Radio Post over the years.

The SWCD thanks all the teachers who inspired their students to enter the contests, the Fredericksburg Lions Club for providing the hamburger dinner, Security State Bank & Trust for donating the prizes, and HEB for providing cookies for dessert.



Left: Nettie Pruett: Conservation Rancher for 2016
Right: Billy & Betty Roeder, Pioneer in Agriculture for 2016



Mesquite Control

The mesquite tree is one of the toughest, most invasive species of brush in the world. It thrives across the western two-thirds of Texas, both in rural pastures and on urban lots.

Here's a three-step way to control mesquite that's easy, inexpensive, environmentally responsible and effective. Using these Brush Busters methods, which involve spraying a small but potent concentration of herbicide directly on each plant, you'll be able to keep the mesquites and other shrubs and trees you want and get rid of those you don't.

Just keep in mind that controlling mesquite is not a one-time job. Livestock and wildlife do an excellent job spreading seeds, so you'll need to go over your land regularly to get rid of unwanted seedlings.

Professionals with the Texas AgriLife Research and Extension Service, both agencies of the Texas A&M University System, have developed and approved these three-step Brush Busters methods of mesquite control. Your results may vary with weather and other conditions, but you should be able to knock out more than seven of ten mesquites treated.

Brush Busters recommends two ways to control mesquite, depending upon tree shape. If most of your mesquites have a few well-defined stems or trunks coming out of the ground, you'll find the Stem Spray Method works best for you. If your mesquites are bushy, have many stems at ground level, and are less than 6 to 8 feet tall, try the Leaf Spray Method. Whichever way you choose, with these simple directions, you'll find you can successfully control your mesquites the 1-2-3 Brush Busters way.

Works Best:

On mesquites that are bushy, have many stems at ground level, and are less than 8 feet tall. This method has also been known as high-volume foliar spraying.

When to Apply:

Begin in spring, when mesquite leaves change color from a light pea green to a uniform dark green, and continue through September. Allow mesquite that has been topkilled by hand cutting, fire, mechanical methods or herbicide treatment to grow for two full growing seasons before using the Brush Busters leaf spray.

1. Prepare Equipment

Small pump-up garden sprayers, backpack sprayers, cattle sprayers, or sprayers mounted on 4-wheel-drive all-terrain vehicle, (ATVs) work well. Garden sprayers are best for small acreages. Backpack sprayers are usually the most efficient in dense mesquite, while ATV sprayers become more efficient in large acreages or as the distance between plants increases. Make sure your spray gun has an adjustable cone nozzle, such as a Conejet® 5500-X6 or -X8 capable of delivering a coarse spray (large droplets) to the top of an 8-foot tree.

2. Mix Herbicide Spray

You can achieve 76 to 100 percent root kill by spraying with a mixture of the herbicides Reclaim™ and Remedy™. To ensure a thorough coating of the foliage, add either liquid dishwashing detergent or a non-ionic surfactant to the spray mix (see table). It may be helpful to add a dye, such as Hi-Light Blue Dye™, to mark plants that have been sprayed.

3. Spray the Mesquite

Begin spraying in the spring after the soil temperature at 12 to 18 inches deep has reached 75 degrees and after the mesquite foliage has changed from a light pea green color to a uniform dark green color. The spray period will last through September. (In East and South Texas, however, the suggested cutoff date for leaf spraying is July 31.) Wet all the foliage of each mesquite plant until the leaves are almost to the point of dripping.

Keep these points in mind:

- Follow herbicide label directions.
 - For best results, don't spray when:
 - rains have stimulated light green new growth in tree tops.
 - mesquite leaves are wet.
 - mesquite foliage shows damage from hail, insects or disease.
- you are working upwind of desirable trees, shrubs or crops.

Your cost of treatment increases rapidly as the density and size of brush increases. Also, controlling mesquite is not a one-time job. You'll need to go over your land now and then to get rid of unwanted mesquite sprouts.

Conservation thru the Natural Resources Conservation Service

FARM BILL UPDATE:

The Farm Bill provides conservation opportunities for farmers and ranchers through the Environmental Quality Incentives Program (EQIP). A new Farm Bill was enacted February 7, 2014. Most of the common practices offered in the 2008 Farm Bill are still offered in the new farm bill, but they were regrouped into fewer programs.

For Financial Assistance, EQIP absorbed the Wildlife Habitat Incentive Program (WHIP). NRCS is currently in the process of funding 2015 contracts. Though EQIP has a continuous sign-up for applying, NRCS works with agricultural producers to develop conservation plans tailored to the land and the landowner's goals. A conservation plan is the foundation for receiving NRCS financial assistance with practices like brush management, livestock water supply and distribution, and cross-fencing. NRCS conservation planning services are free to landowners.

In the 2014 Farm Bill For Easements, the new Agricultural Conservation Easement Program formed when three programs combined: the Wetlands Reserve, Grassland Reserve and Farm & Ranch Lands Protection Program.

The NRCS Farm Bill Website is at <<http://www.nrcs.usda.gov/farmbill>>. For more information, visit with NRCS in Fredericksburg at 1906 N. Llano, #106, or call 830-997-3349 ext. 3.

USDA is an equal opportunity provider & employer.

Gillespie County Agricultural Commodity Assoc.

This is an association of farmers and ranchers in Gillespie County. The objectives are to control the predators (coyotes, fox, bobcats and feral hogs) by offering incentives for hunters that harvest these animals by legal means so as to protect domestic animals, desirable wildlife and birds, damage to field crops, prevent the outbreak of diseases associated with the controlled predators, and prevent pollution of our streams and water supply.

The incentive to harvest these animals includes a bounty for coyotes, red fox, and bobcats for anyone who is a member of the Commodity Association. Coyotes - \$125, and \$25 each for red fox and bobcat.

A county-wide contest starting October 1 thru May 31 each year is for anyone and you do not have to be a member. Two thousand dollars in prize money is offered. The categories include hogs, fox, bobcats and coyotes. For more details, contact the AgriLife Extension Office at 830-997-3452.

Ingredient	Concentration in spray solution	Tank Size	Tank Size	Tank Size
Reclaim™	1/2%	3 gal.	14 gal.	25 gal.
Remedy™	1/2%	2 oz.	9 oz.	16 oz.
Surfactant	1/4%	2 oz.	9 oz.	16 oz.
Hi-Light Blue Dye™	1/4-1/2%	1 oz.	5 oz.	8 oz.
		1-2 oz.	5-9 oz.	8-16 oz.

*NOTE: 1% Sendero™ can be used in place of 1/2% Reclaim and 1/2% Remedy

EDMUND JENSCHKE, INC. CONSERVATION CONTRACTOR

Dams • Roads • Land Clearing • Pond Sealing
* Dams are our specialty *

225 Loop 534 • Kerrville, Texas 78028

Tele: 830-896-6706
Fax: 830-896-2135

Joe Ed Jenschke
Bernice Jenschke

Thank You

Fredericksburg Lions Club, Security State Bank & Trust, & H-E-B for the hamburger dinner and dessert for the Conservation Awards on March 23, 2016, and for donating such fine prizes for the poster & essay contest.



TURNER SEED CO.

211 CR 151, Breckenridge, TX 76424
Phone 254-559-2065, Fax 254-559-5024
www.turnerseed.com

Native & Improved Grasses, Forbs, Wildflower Seeds,
Wildlife Seed like Spring Deer Mix and Quail & Turkey Mix

Order seed through Gillespie Co. SWCD
at 830-997-3349 ext. 3



AMERICAN BANK OF TEXAS

Two locations in Fredericksburg

1710 North Llano &
1037 Highway 16 South
Fredericksburg, Texas 78624
830-997-9564
ABTexas.com



Member
FDIC

H. MOELLERING CONST., LLC



Fredericksburg, TX 78624 * (830) 997-7056
Land Clearing, Cedar Shearing, Land Preparation,
Cattle Guards, Customized Gates,
Dams, Roads



SALES:

Sheep & Goats - Tuesdays - 9:30 A.M.
Cattle - Wednesdays - 12:00 Noon

Special Calf Sale and Weaned Stocker/Feeder Sales
Second Wednesday of each month

GILLESPIE LIVESTOCK CO., INC.

P. O. BOX 454 • Fredericksburg, Texas 78624 • 830-997-4394
www.gillespielivestock.com

Wayne Geistweidt
830-997-2368

Shaun Geistweidt
830-998-4233



Arrowhead Bank

Tony Klein
Senior Executive Vice President
Manager
502 South Adams
Fredericksburg, Texas 78624
Office (830) 990-9300
Fax (830) 990-5877
Email tklein@arrowheadbanktexas.com



LAND CLEARING

BRENT STRACKBEIN, INC.

Professional Land Clearing: cedar, mesquite, oaks, etc.
Remove unwanted trees and brush with
little disruption to your land.
Also available for shredding.
Since 1995. Free estimates.
Pricing by the hour, acre, or job.



Farm Service Agency News Updates

- County Committee nominating Petition drive will end **August 1st**. If you are interested in running for a spot on the county committee stop by the FSA Office for more information.
- Acreage Reporting deadline for Corn, Grain Sorghum, Haygrazers and other spring crops is **July 15th**.
- ARC/PLC sign up the Old Direct and Counter Cyclical program (DCP) will end **August 1st**.
- Farm Record update, to participate in any USDA program you must have a farm record established with FSA. We will need a survey plate, deed, name and address of the owner and/or operator. This information must be identified in the FSA software mapping system.
- Changes occurring this year in the drawing of your farm on the mapping system. We are required to take out houses, barns, roads, water bodies, pens, and other areas that cannot be grazed by livestock. Please review these maps when you visit the office.

For information about these programs or any other program or question you may have please either stop by the FSA office at 1906 N Llano St. 107 in Fredericksburg, or call 830-997-3453 Ext 2 or 830-997-3713 Ext 2.

Gillespie County SWCD Equipment Rentals

The District owns rental equipment for agricultural use in the county. Weed sprayers and a seed spreader are kept at Beyer Fertilizer & Feed, 3446 Highway 16 North, in Fredericksburg.

You can make rental arrangements with Dwayne Beyer at (830) 997-9880. The sprayers each rent for \$2.50/acre with a \$50.00 minimum. The grass seed spreader with 700 lb. capacity rents for \$35/day.

The District's drip torch and small seeders are kept at the NRCS/SWCD office at 1906 North Llano. To rent our small equipment, call the SWCD at (830) 997-3349 x3. The drip torch and cyclone hand seeder each rent for \$5/day. The seeder for a 4-wheeler rents for \$15/day.

SWCD equipment rentals are taxable unless used for agricultural purposes and an ag/timber number is provided for the tax exemption.



2016 Annual Fish Sale

The Gillespie SWCD held its annual fish sale on April 29th. With the rain we had, the tanks were filling up slowly. We had a very good turnout at the sale. There were a variety of fish available. The most popular was the channel cat. Many people like to restock their tanks with fish to allow a new crop of fish. With all of the rain we have had this past month, most of the tanks and ponds are full. The SWCD will most likely hold another fish sale in the fall. Please check with us for those upcoming dates.

Advertise with us! Gillespie County SWCD writes a newsletter twice a year. It's published with the Fredericksburg Standard-Radio Post. If you want to place an ad in our newsletter, or want copies of the newsletter to distribute at your business, please call SWCD/NRCS office at 830-997-3349 x 3. Thank you.



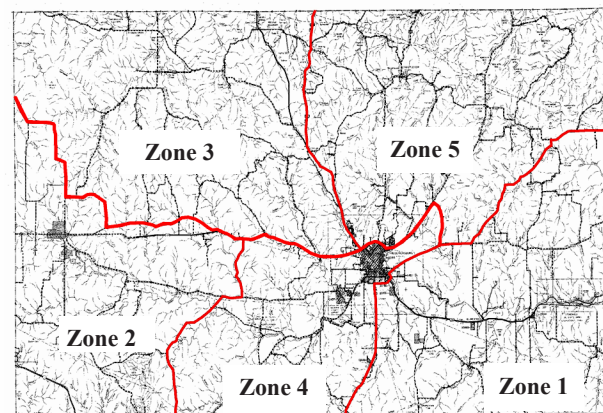
Gillespie County SWCD General Info.

www.gillespiecountyswcd.org

We are a member of the Assoc. of Texas Soil & Water Conservation Districts, National Assoc. of Conservation Districts & Texas Assoc. of Watershed Sponsors. We co sponsor the Williams Creek Watershed Dams with Gillespie County WCID.

SWCD Directors are:

- Zone 1 Guenther Ottmers, Jr., Secretary-Treasurer
- Zone 2 Patrick Kunz, Vice-Chairman
- Zone 3 Neal Eckert, Director
- Zone 4 Cade Bonn, Director
- Zone 5 James Wahrmond, Chairman



The Gillespie SWCD shares office space with NRCS at 1906 N. Llano, Fredericksburg, TX 78624. Phone is 830-997-3349 x 3.

NRCS hours are M-F 8:00 to 4:30 (closed 12:00-1:00), but staff may be out in the field on any given day. Please call before driving in to meet with the SWCD or NRCS, to be sure the person you need will be there.

Thank You to the 2016 Beef and Range Field Day Supporters, Exhibitors, & Program Speakers

- American Bank of Texas
- Arrowhead Bank
- Bar-O-Bar Ranches, Inc.
- Royce & Karen Herbort
- Lochte Feed & General Store
- Behrends Feed & Fertilizer
- Behrends Feed at Bode's
- C&M Precast Concrete Co.
- Capital Farm Credit
- Willard Dearing -Plant ID
- Mike & Mary Porter
- Eckert & Son Auto Salvage
- Fredericksburg Equipment
- Gillespie County Fair & Festivals Association
- Bernice Jenschke
- Kunz & Sauer Fencing
- Kramer's The Outdoor Store
- ACCO Feeds
- Ranchers ATV & Tractor
- Security State Bank & Trust
- Stay-Tuff Fence Mfg., Inc.
- Max Hartmann
- Oak Valley Outdoor Repair
- TX AgriLife Extension
- Vernon & Linda Treibs
- Turner Seed Company
- Allied Ag Services
- Chem Air
- Department of Public Safety
- Lyssy & Eckel Feeds
- Natural Resources Conservation Service
- Dow AgriSciences
- Gillespie County Agriculture Commodity Assn.
- Reeh Brangus
- Central Texas Electric Coop.
- Walter Moss Seed Co.
- Frantzen Kaderli & Klier

Thank You to All Who Support the Gillespie County SWCD

- Allied Agricultural Services
- American Bank of Texas
- Arrowhead Bank
- Bar-O-Bar Ranches, Inc.
- Behrends Feed & Fertilizer
- Behrends Feed at Bode's
- Beyer Fertilizer & Feed
- Capital Farm Credit
- Central Texas Electric Co-op
- Creative Awards & Trophies
- Willard Dearing
- Dietel & Son Printing
- Dow AgriSciences
- Eckert & Son Auto Salvage
- Ersch Farms, Agritech
- Fredericksburg Standard-Radio Post
- Bernice Jenschke/Edmund Jenschke Inc.
- Fredericksburg Lions Club
- Genesis General Store, Harper
- Gillespie County Farm Bureau
- Gillespie Fair & Festivals Assoc.
- Gillespie Livestock Co., Inc.
- Gordon's Repair Shop
- H. Moellering Construction, LLC
- Max Hartmann,
- Texas & SW Cattle Raisers
- Hohmann's General Store
- Hügelland Feed, Inc.
- JEK's Pit Stop
- Jenschke Farm & Ranch Ltd.
- KNAF Radio
- Kramer's The Outdoor Store
- ACCO Feeds
- Kunz & Sauer Fencing
- Lochte Storage & Commission
- Lyssy & Eckel Feeds
- Security State Bank & Trust
- Steve Stengel
- Stonewall Body Shop
- Stroehrer & Olfers, Inc.
- Sutherland Lumber Co.
- Texas AgriLIFE Extension
- Texas Parks & Wildlife
- Tractor Supply
- Vernon & Linda Treibs
- Turner Seed Company
- Weinheimer & Son, Inc.
- NAPA
- Danny & Peggy Reeh

Texas Master Naturalist Land Management Assistance Program is sponsored by Texas AgriLife Extension and Texas Parks & Wildlife. The Hill Country Chapter of Texas Master Naturalists has trained volunteers to visit your property to help identify trees, shrubs, wildflowers & grasses, and to discuss your goals, plans and concerns. For a free volunteer consultation on your property in Gillespie County, call Jim Stanley at 830-257-2094.

Master Gardeners Will Answer Gardening Questions by Phone or Email

Hill Country Master Gardeners can answer gardening questions from residents of local and surrounding areas. Master Gardeners is a service group helping Texas AgriLife Extension to meet community horticulture needs.

To ask questions, call 830-257-6568; visit www.hillcountrymastergardeners.org or send email to kerr@ag.tamu.edu.

BONN SURVEYING CAREY BONN

Registered Professional Land Surveyor
Firm Reg. No 10055800

503 Longhorn Street Office 830-997-3884
Fredericksburg, TX 78624 Fax 830-997-0972

NIELSEN CONSTRUCTION

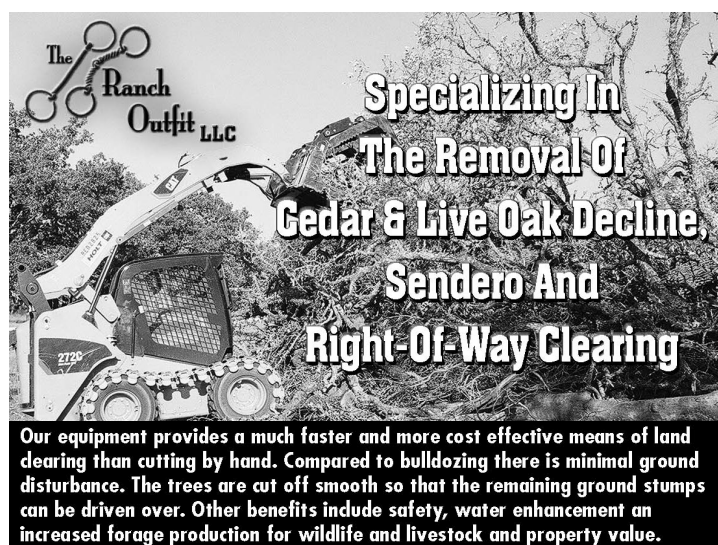


ALL TYPES OF DIRT WORK & EXCAVATION INCLUDING CONCRETE DAMS & WATER CROSSINGS
"We'll Move The Earth For You"



Land Clearing & Leveling—Road Work Building Pads—Tank & Dam Building Large Rock Retaining Walls

Bradley Nielsen - Stonewall, TX 830-644-2649



Our equipment provides a much faster and more cost effective means of land clearing than cutting by hand. Compared to bulldozing there is minimal ground disturbance. The trees are cut off smooth so that the remaining ground stumps can be driven over. Other benefits include safety, water enhancement and increased forage production for wildlife and livestock and property value.

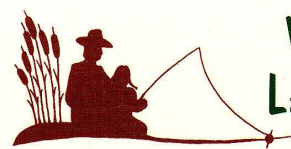
Give us a call today!
Please call:
John McDougall
830/864-4167
jbm_thebranchoutfit@yahoo.com



161 Industrial Loop Fredericksburg, Texas

Water Well Drilling Pump Sales & Service

(830) 997-4966 or (325) 247-4249
www.virdelldrilling.com
virdell-drill-



Vollmar Pond & Lake Management

BRAD VOLLMAR

830-992-0928 brad@texaspondmanagement.com

You Fish...We Handle the Rest!
www.texaspondmanagement.com

Winter 2016
Rainbow Trout Stocking

KUNZ & SAUER FENCING

4689 White Oak Road
Fredericksburg, Texas 78624
All Types Fences and Pens
For Free Estimates, Call After 6 P.M.
Patrick Kunz - (830) 997-8982
Rodney Sauer - (830) 997-9407



NUTREBEEF®
CARMELYX™
18% & 28% Supplement Tubs
More Beef • Less Cost

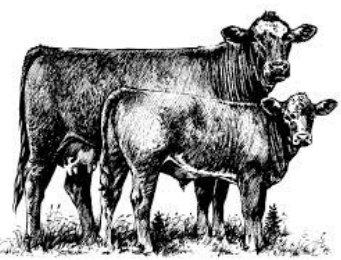
Kramer's Wood & Metal Works

2369 North U.S. Highway 87
Fredericksburg, TX 78624
830-997-9457



www.recordrack.com

Complete line of deer and cattle feed



GILLESPIE SWCD ANNUAL REPORT

FY 2016 Activities

- Completed Program & Plan of Work. Renewed Cooperative Working Agreement with NRCS, USDA, TSSWCB & Gillespie SWCD.
- Attended 2015 Annual State Meeting of SWCDs in Corpus Christi, TX on Oct. 26-28.
- Attended Texas Assoc. of Watershed Sponsors (TAWs) Mar 28, 2016 meeting.
- Co-sponsored Annual Conservation Awards Dinner with the Fredericksburg Lions Club & Security State Bank & Trust on Mar. 23, 2016;
- Held Fish Sale on April 29, 2016 at Gillespie County Fair Grounds.
- With Gillespie WCID directors & NRCS, inspected dams on April 20, 2016.
- Attended Area 2 Awards dinner in Wall, TX on May 3. Caleb Olfers won 1st place in the junior division essay contest; Fredericksburg Standard-Radio Post won runner up for Friend of Conservation
- Directors met w/ Hill Country Assoc. of SWCDs at Leaning Bluff Lodge, in Bend, TX, on May 25, 2016.
- Co-sponsored Beef/Range Field Day at Gillespie Co. Fair Ground Show barn, May 12, 2016.
- Hosted Local Work Group meeting for NRCS' Environmental Quality Incentives Program (EQIP) on June 20, 2016.
- Exhibited educational booth at Gillespie County Fair Aug. 21-23, 2015.
- Co-Sponsored Oct. 14, 2015 Fall Field Day, Gillespie County Fair Ground Show barn

MAJOR CONCERNS OF GILLESPIE SWCD

Gillespie County SWCD will focus long-range planning on: Water quantity & quality; Critical area erosion; Proper grassland and brush management; Prescribed burns to control brush re-growth & improve wildlife habitat; Maintaining conservation practices; & Continue application of EQIP.

FY 2015/16 PROGRESS SUMMARY - NRCS

In addressing our major concerns, these are some of the conservation practices applied during FY 2015/16 in Gillespie County through the NRCS Fredericksburg Field Office:

- 115 acres of pasture planting and range seeding were completed.
- 20,002 feet of cross fencing for grazing distribution were installed.
- 7,642 feet of pipeline for grazing distribution were installed.
- 9 wells were drilled for livestock water development.
- 12 pumping plants (pumps) were installed for delivery of livestock water
- 32 water storage or drinking facilities were installed to improve grazing distribution.
- 3,026 acres of brush controls were completed.
- 3,330 feet of irrigation pipeline was installed to supply water to a 600 ft. pivot.
- Prescribed grazing management was applied on 32,397 acres.
- Upland Wildlife Habitat Management was applied on 21,406 acres.
- Currently, there are 42 active Long-Term Cost Shared Contracts (EQIP, WHIP, & CSTP)

Range Plants of North Central Texas Book is available at the Gillespie County SWCD. It is a donation of \$25.00. You can pick yours up today at the office located at 1906 N. Llano Office # 106. Please call the office at (830)997-3349 ext. 3 with any questions.



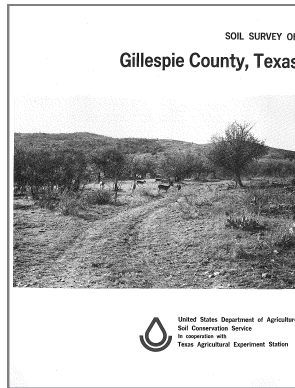
Free Soil Survey Book at NRCS Office

Our Fredericksburg NRCS office has extra copies of a book, Soil Survey of Gillespie County, Texas, published in 1975 by USDA Soil Conservation Service with Texas Agricultural Experiment Station.

While supplies last, anyone who wants a free copy may drop by the office & ask for one.

It has a color General Soil Map for Gillespie County and 77 detailed (b&w) soils maps which together cover the whole county. Soil types are described in detail and there are 40 pages about use &

management of the soils. The maps are also online at http://soils.usda.gov/survey/online_surveys/texas/. But if you'd rather read maps in a book, please come & get one.



Utilities Inventory Call Before You Dig

Construction of conservation practices on your property could endanger life & property involvement of utilities located in the construction area. Because of this, NRCS is required to inform you of the state law requiring you and/or your contractor to notify: One Call Board of Texas at 1-800-545-6005

no more than 14 days nor less than 48 hours excluding Saturdays, Sundays, & legal holidays, before starting construction/excavation.

You and/or your contractor are also responsible for notifying utilities who are non-members of the Texas One-Call System. Some local utilities including water, waste water, slurry and overhead utilities are not required to join a notification or one-call center.

NRCS can provide the form to use for Co-operator Confirmation of the One-Call Utility Safety System; people with EQIP contracts are required to have the completed One-Call form on file.

TATSCH WELL SERVICE

Dennis S. Tatsch, Owner
Fredericksburg, TX



Serving the Hill Country Since 1973

Windmills - Jets - Solar Pumps - Submersible Pumps
All Your Home and Ranch Needs - Free Estimates
Insured, Licensed & Bonded - LC # 4502 KLP



Find us on Facebook

Office: (830) 997-2413
Fax: (830) 997-4044

www.hillcountrywaterwell.com

Bar O Bar Ranches Inc.

Brush Clearing & Sculpting - Roads - Fire Lanes - Tanks
Fence Lines - GPS-Equipped Dozers
Rural Land Consulting - GPS & GIS Mapping
Aerial Photography & Topography Maps
Native & Introduced Seed Mixes

Assistant Manager:
Mark Geistweidt
830-669-2079
markgeistweidt@gmail.com

Owner / Manager:
Kurt Geistweidt
barobarranch@hctc.net
830-669-2352

Assistant Manager:
Adam Geistweidt
830-669-2045
adam_geistweidt@hotmail.com

Allied Agricultural Services, Inc.

Stonewall, Texas 830-644-2411

Custom Fertilizing & Spraying Liquid Fertilizer Blended to Special Needs,
Purina Liquid Feed and Bag Feed, Lyssy & Eckel Feeds, Lindner Feed,
Honor Show Feeds, Deer Feed Bulk & Bag, Seeds,
Insecticides, Sullivan Show Supplies,
Livestock and Drip Irrigation Supplies



Lyssy & Eckel
Show Feed



stroehrer & Son, Inc. & Olfers, Inc.

(830) 997-4382
Fax (830) 997-0137
1-800-369-9173

509 S. Adams St., Fredericksburg, TX 78624
"Serving the Hill Country Since 1928"



Kawasaki
Let the good times roll.



RUNNING CLEAN CAR WASH •
TIRES • BATTERIES • ACCESSORIES •
PETROLEUM PRODUCTS



United States Department of Agriculture Natural Resources Conservation Service

The USDA Natural Resources Conservation Service Fredericksburg field office provides technical assistance to land users in Gillespie County. The NRCS District Conservationist for Fredericksburg is Wayne Seipp. NRCS Rangeland Management Specialists Amanda Kirchner and Jess Anderson will also be happy to help you with conservation concerns. NRCS' office hours are 8:00 to 4:30. The phone number is (830) 997-3349 x3. The NRCS Texas web site is at <http://www.tx.nrcs.usda.gov/>.

BRAND SODIUM BENTONITE

For sealing leaking ponds, landfill, and well plugging.
Environmentally safe, naturally swelling clay.
Bulk Truck or by the 50 lb. Bag.

REX BRAND

1-830-866-3637 or Mobile 1-830-739-6194
Mountain Home, Texas

Calendar of Events Spring-Summer 2015

Spring Farmers Market: Every Thursday 4-7p.m. Located at Marktplatz Kinder Halle

Fredericksburg Trade Days: Every 3rd weekend of the month Located at 355 Sunday Farms Lane, Fredericksburg.

June 20, 2016 Local Work Group Meeting: 10a.m. at Extension Building.
Contact Gillespie SWCD for details (830)997-3349 ext. 3.

July 29, 2016 Hay Show: Deadline for hay entries, Contact Gillespie County Extension office at (830)997-3452 for details.

The Gillespie County Soil and Water Conservation District provides technical assistance to all land users in the county through the Natural Resources Conservation Service field office at 1906 North Llano Street, #106, in Fredericksburg, (830) 997-3349 ext. 3.

The Gillespie County Soil and Water Conservation District prohibits discrimination in its programs and activities on the basis of race, color, sex, national origin, religion, age, disability, political beliefs, and marital or familial status. (Not all prohibited bases apply in all programs.) Persons with disabilities who require alternative means for communication of program information (Braille, large print, audiotapes, etc.), should contact the SWCD office at (830) 997-3349 ext. 3. "An Equal Opportunity Employer."